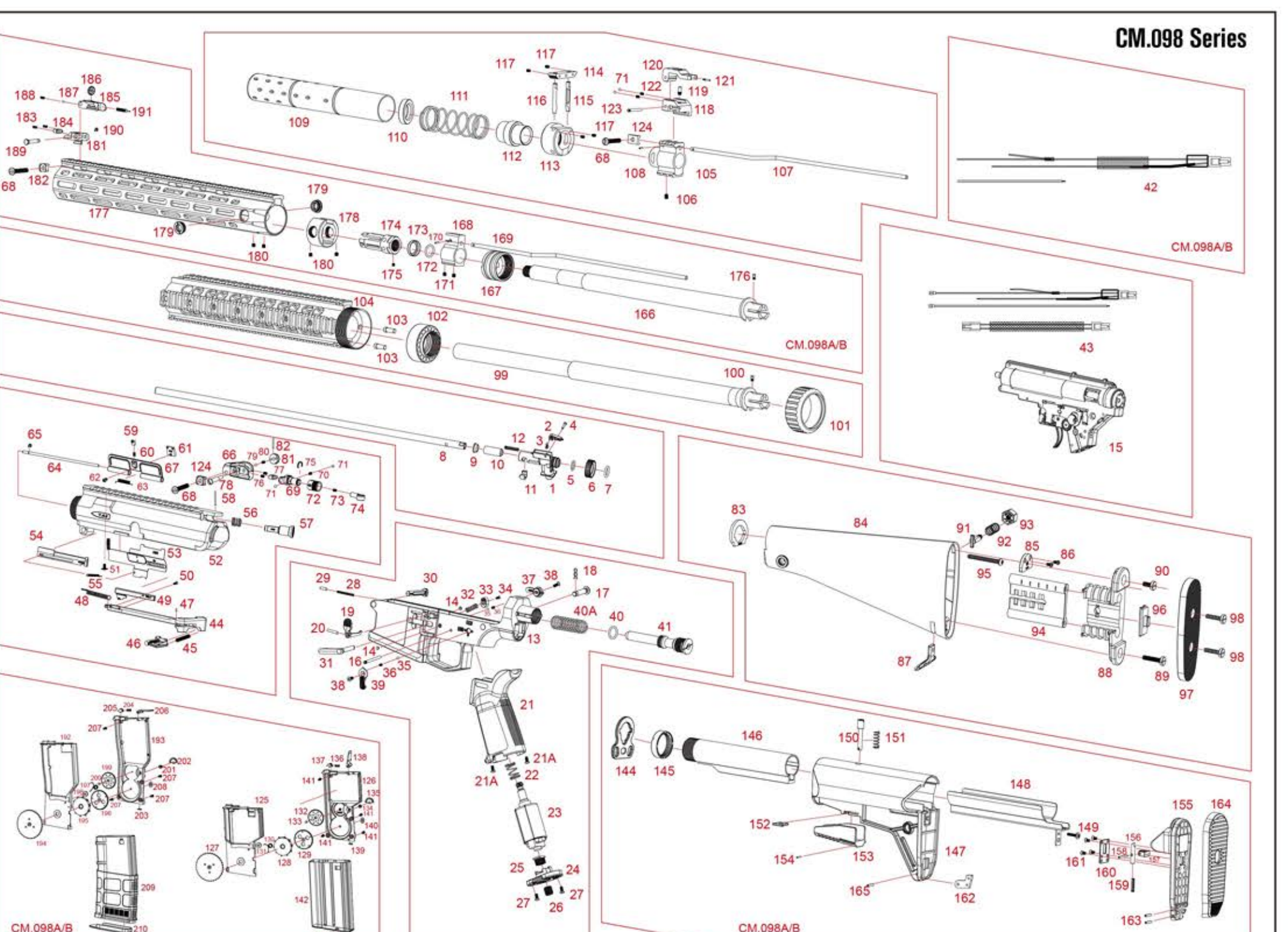
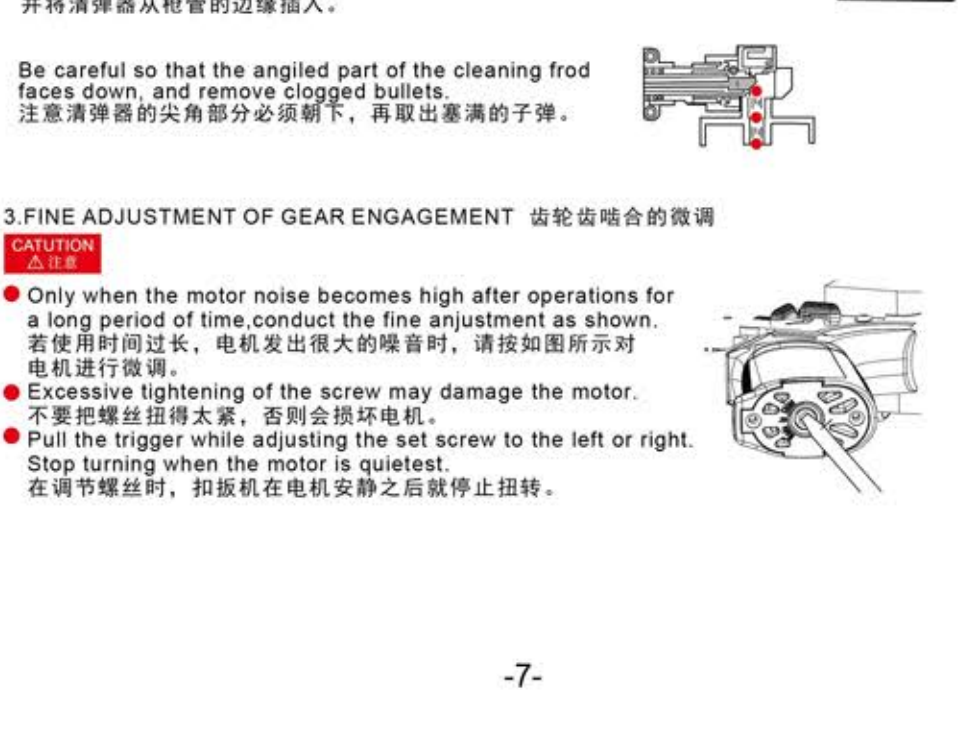
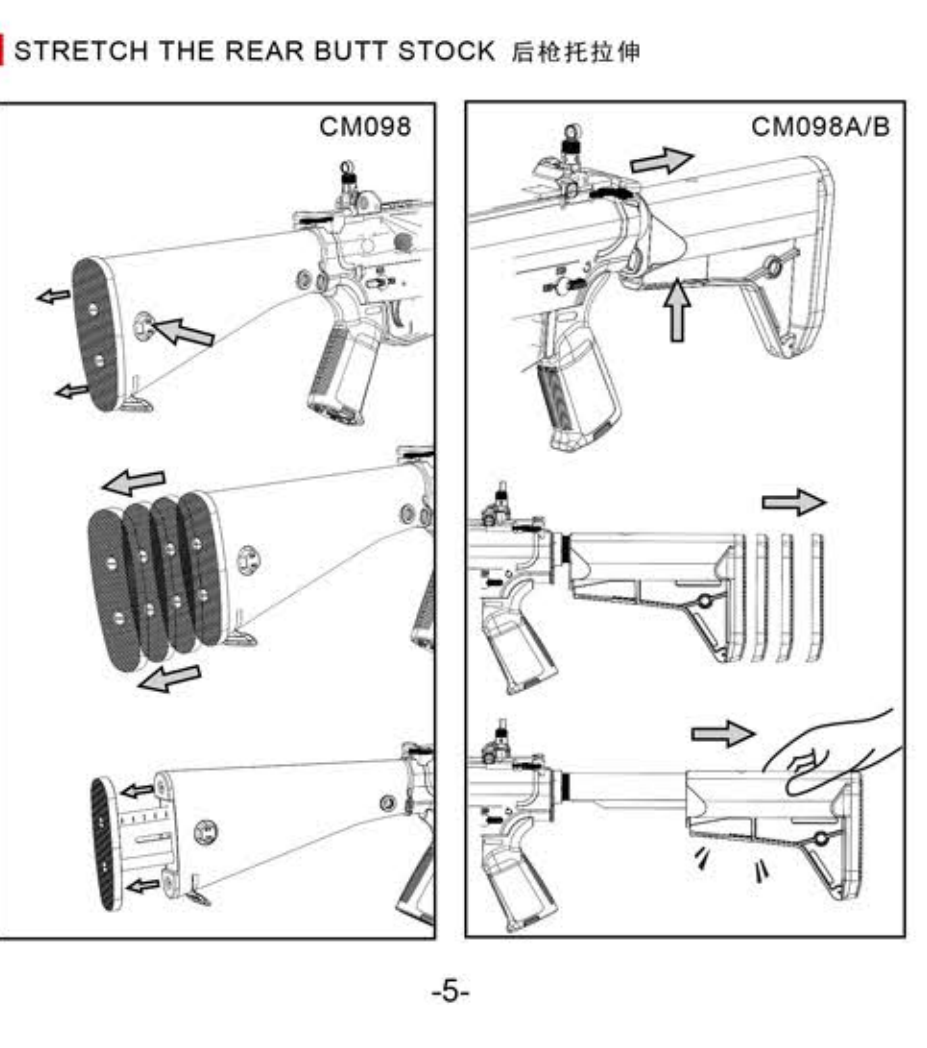
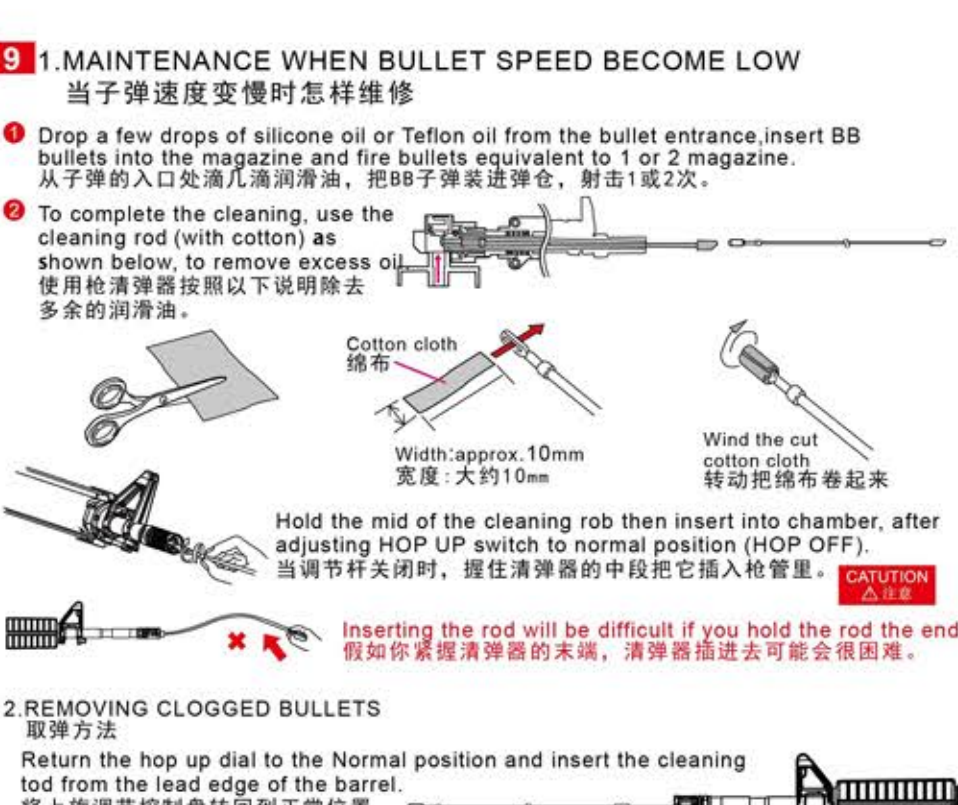
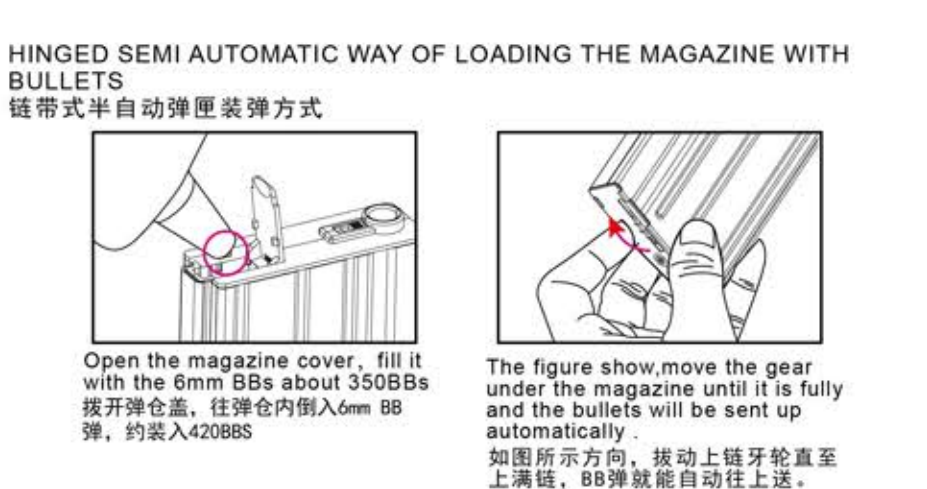
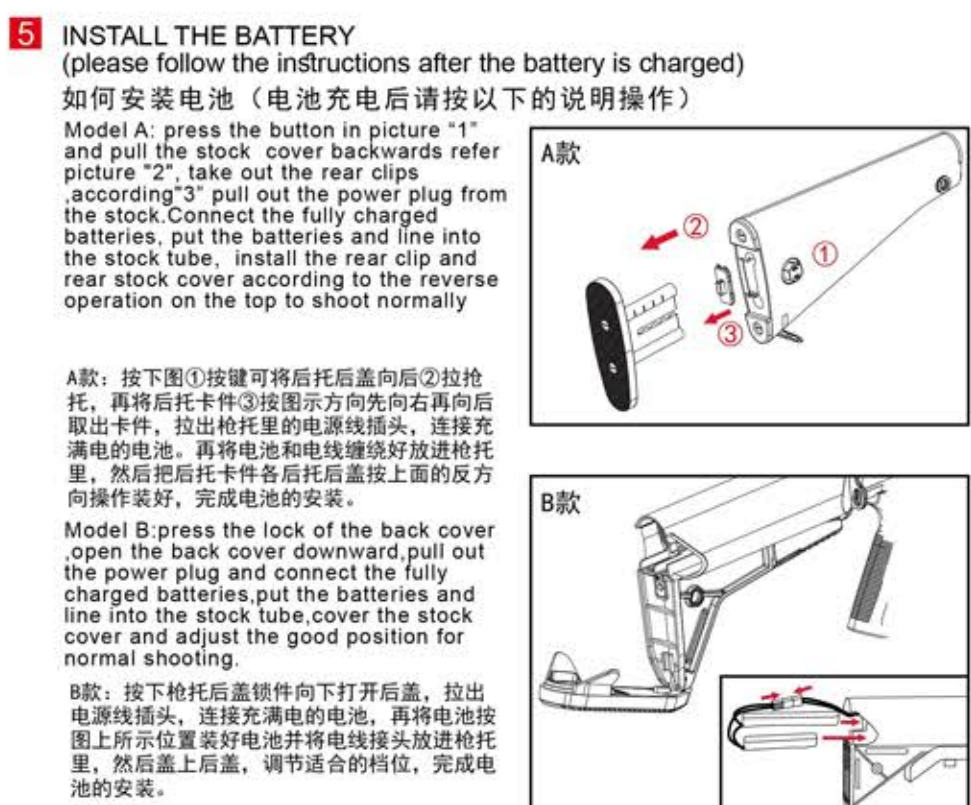
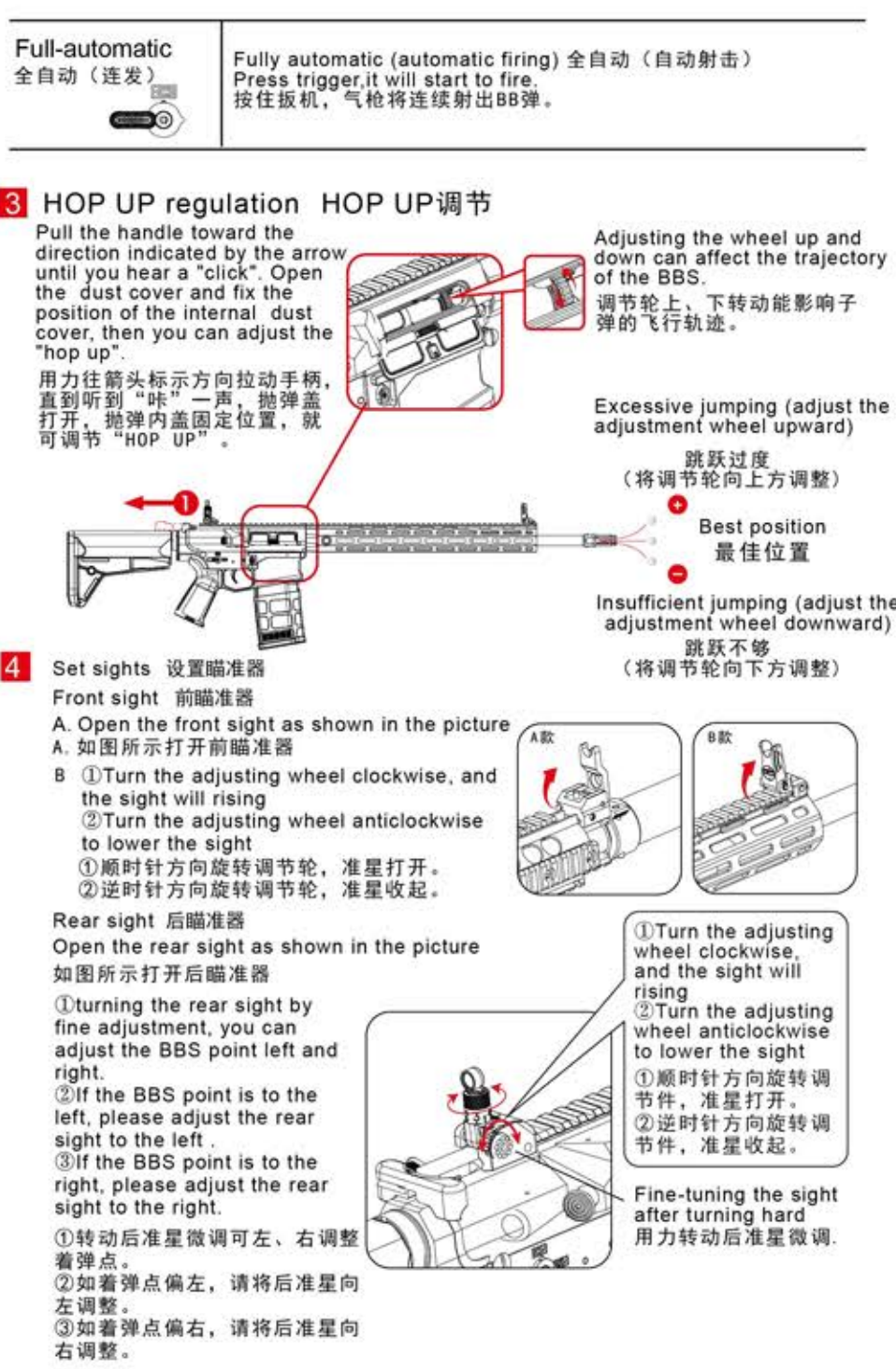
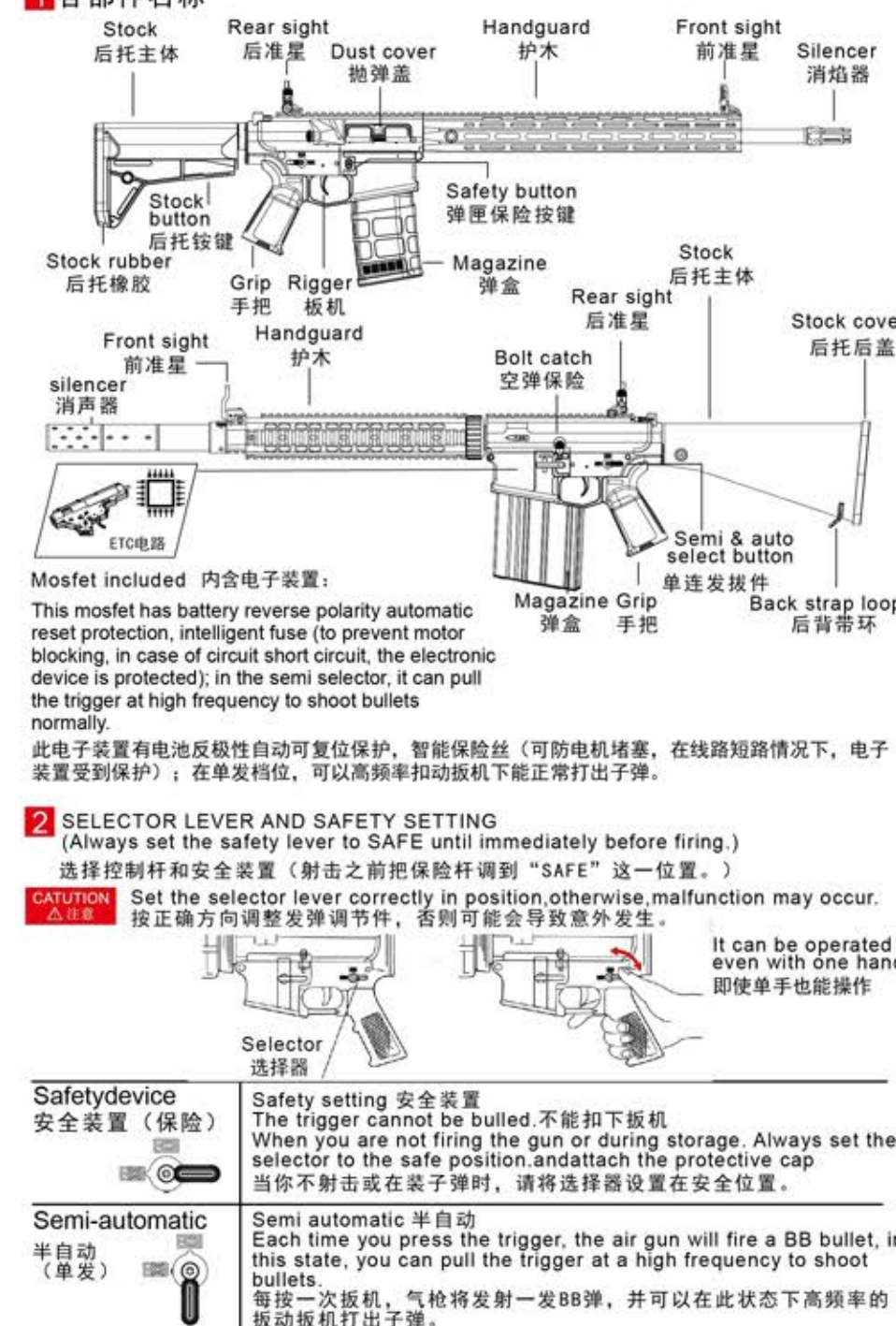


**WARNING**  
警告

Always wear eye protective gear. 玩枪时, 请始终戴着眼保护装置。  
 When shooting the air gun for a target or game, you and all participants must wear goggles or other eye protective gear, also paying attention to ricochets. (Pay sufficient attention also to third personnel other than participants.)  
 当使用汽枪射击目标或游戏时, 你和所有的参与者都必须戴着防护眼镜或其它眼保护装置, 同时要注意子弹的弹跳方向。(而且要特别注意不能射向游戏者以外的第三者。)  
 You may be punished if you are shooting for a practical joke. 如果用汽枪射击恶作剧, 可能会受到惩罚。  
 You may be punished if you damage public or personal properties or injure a person or animal even if you are shooting for a practical joke. Always observe manners and enjoy healthy sport shooting.  
 如果你损害公共的或私人的财产, 或者伤害人或动物, 即使你是在进行射击实践游戏, 你也会受到惩罚。请始终守规定, 享受有益健康的运动射击。  
 Never disassemble or modify the air gun. 避免拆除或修改该气枪。  
 This air gun is manufactured under consideration of appropriate performance and operability. Disassembling or modifying the gun may generate danger or adversely affect the performance. So, avoid disassembling or modifying the air gun.  
 该气枪是根据适当的性能和操作而制造的。拆除或改装气枪可能产生危险或者逆反操作。因此要避免拆除或改装该气枪。  
 Never look into the gun muzzle. 禁止直视枪口。  
 Never shoot at any human or animal. 禁止射人或动物。  
 Do not look directly into the muzzle to avoid accidental discharge of BBs. 不要直接地看枪口, 避免BB弹意外射击。  
 Never aim or shoot a person or animal as the target. Always attach the protective plug to the muzzle. 不可把人或动物当作目标瞄准或射击。  
 Please read the instructions carefully before use. (Please read the Notice in details).  
 Please retain the instructions for future reference.  
 Don't use it improperly or refit the air gun.  
 使用前请完整阅读说明书(注意部分详细阅读)  
 保存好此说明书以供日后使用参照  
 切勿错误使用或改装气枪

**1 各部件名称**



1 后托主体	Hop up body	71 后托橡胶	3mm iron beads	142 消声器	Cartridge case
2 后托橡胶	Adjustable rubber seat	72 后托橡胶	Rear sight adjusting part	143 M3*1.5mm	M3*1.5mm
3 防尘盖	Dust cover	73 后托橡胶	Rear sight spring	144 后托橡胶	Back band
4 护木	Handguard	74 后托橡胶	Rear sight	145 后托橡胶	Q1 of stock nut
5 前准星	Front sight	75 后托橡胶	Spring ring ch-31	146 后托橡胶	M4 of stock core
6 后托主体	Stock	76 后托橡胶	Camp spring	147 后托橡胶	Stock body
7 后托橡胶	Stock rubber	77 后托橡胶	Location part	148 后托橡胶	Stock base
8 握把	Grip	78 后托橡胶	Rear sight adjusting screw	149 后托橡胶	Control screw
9 扳机	Rigger	79 后托橡胶	Adjusting spring	150 后托橡胶	Control screw
10 弹匣	Magazine	80 后托橡胶	Q2 iron beads	151 后托橡胶	Control screw
11 空弹保险	Bolt catch	81 后托橡胶	Rear sight fine-tuning	152 后托橡胶	Stock button spring
12 后托后盖	Stock cover	82 后托橡胶	1.5 12mm iron beads	153 后托橡胶	Stock button clip
13 后托后盖锁扣	Stock cover lock	83 后托橡胶	Stock clip	154 后托橡胶	Press screw elastic pin
14 电源线	Power plug	84 后托橡胶	Stock clip	155 后托橡胶	Stock cover
15 电源线插头	Power plug head	85 后托橡胶	Stock clip part	156 后托橡胶	Rear cover clip
16 电源线插头	Power plug head	86 后托橡胶	Stock clip part	157 后托橡胶	Rear cover part
17 电源线插头	Power plug head	87 后托橡胶	Stock clip part	158 后托橡胶	Flexible pin for back cover part
18 电源线插头	Power plug head	88 后托橡胶	Stock clip part	159 后托橡胶	Back cover clamp spring
19 电源线插头	Power plug head	89 后托橡胶	Stock clip part	160 后托橡胶	Back cover clamp
20 电源线插头	Power plug head	90 后托橡胶	Stock clip part	161 后托橡胶	Back cover clamp
21 电源线插头	Power plug head	91 后托橡胶	Stock clip part	162 后托橡胶	Back cover clamp
22 电源线插头	Power plug head	92 后托橡胶	Stock clip part	163 后托橡胶	Back cover clamp
23 电源线插头	Power plug head	93 后托橡胶	Stock clip part	164 后托橡胶	Back cover clamp
24 电源线插头	Power plug head	94 后托橡胶	Stock clip part	165 后托橡胶	Back cover clamp
25 电源线插头	Power plug head	95 后托橡胶	Stock clip part	166 后托橡胶	Back cover clamp
26 电源线插头	Power plug head	96 后托橡胶	Stock clip part	167 后托橡胶	Back cover clamp
27 电源线插头	Power plug head	97 后托橡胶	Stock clip part	168 后托橡胶	Back cover clamp